



TAKE A WALK ON THE WILD SIDE WITH TREX[®] TRACTION



6300
Slip-On Ice Cleats



6300TC
Slip-On Ice Cleats - Tungsten Carbide



6304
Step-In Ice Cleats - Full Coverage



6310
Adjustable Slip-On Ice Cleats



6306
Ice Traction Cleats



6315
Strap-On Ice Cleats



6316
Mid-Foot Ice Cleats - Flat Sole



6317
Mid-Sole Ice Cleats - Heeled Boots



6325
Spikeless Traction Devices - Winter Conditions



6326
Spikeless Traction Device - Slip-Resistant and Oil-Resistant

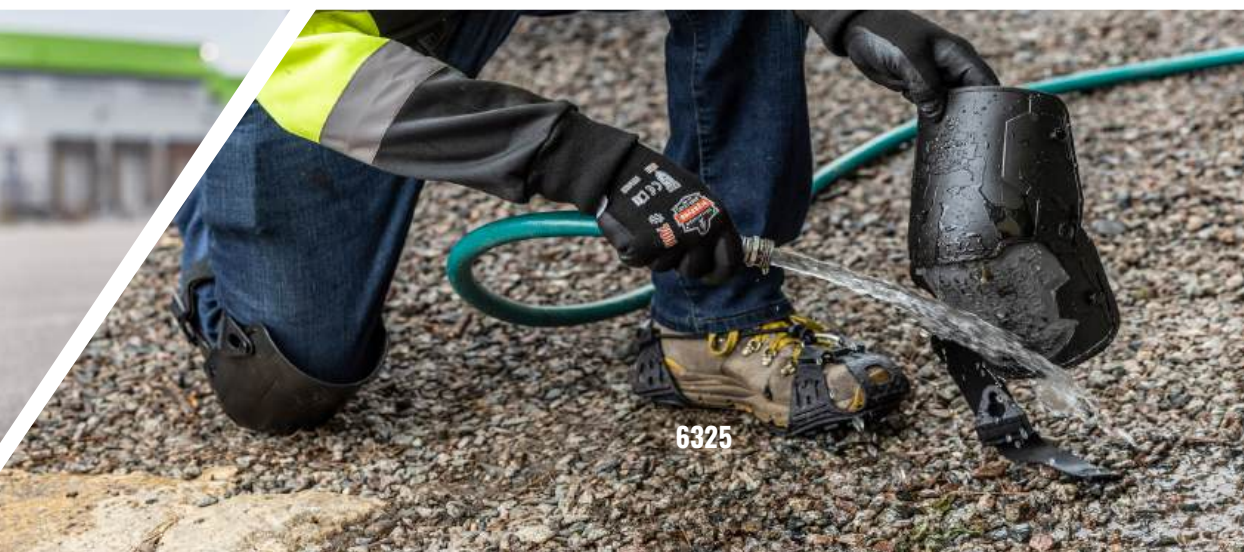
SIZING (MARKED IN WORK BOOT SIZES)	M (5-7.5 US MENS) L (8-10.5 US MENS) XL (11-14.5 US MENS) 2XL (15-17.5 US MENS)	M (5-7.5 US MENS) L (8-10.5 US MENS) XL (11-14.5 US MENS) 2XL (15-17.5 US MENS)	S (5-6.5 US MENS) M (7-8.5 US MENS) L (9-10.5 US MENS) XL (11-13.5 US MENS)	M (5-7.5 US MENS) L (8-10.5 US MENS) XL (11-13.5 US MENS)	S (5-6.5 US MENS) M (7-9 US MENS) L (9.5-11 US MENS) XL (11.5-13 MENS)	M/L (5-11 US MENS) XL (11-16 US MENS)	ONE SIZE FITS MOST (ADJUSTABLE)	ONE SIZE FITS MOST (ADJUSTABLE)	S (5-7 US MENS) M (7.5-9 US MENS) L (9.5-11 US MENS) XL (11.5-13 US MENS) 2XL (14-16 US MENS)	S (5-7 US MENS) M (7.5-9 US MENS) L (9.5-11 US MENS) XL (11.5-14 MENS)
LOCATION USAGE	OUTDOOR ONLY	OUTDOOR ONLY	OUTDOOR ONLY	OUTDOOR ONLY	OUTDOOR ONLY	OUTDOOR ONLY	OUTDOOR ONLY - (EASILY MOVES TO SIDE OF SHOE WHEN TRANSITIONING BETWEEN INDOOR + OUTDOOR LOCATIONS)	OUTDOOR ONLY - (EASILY MOVES TO SIDE OF SHOE WHEN TRANSITIONING BETWEEN INDOOR + OUTDOOR LOCATIONS)	INDOOR + OUTDOOR	INDOOR ONLY
APPLICABLE WALKING CONDITIONS	SNOW, ICE + SLUSH	SNOW, ICE + SLUSH	SNOW, ICE + SLUSH	SNOW, ICE + SLUSH	SNOW, ICE + SLUSH	SNOW, ICE, SLUSH, DRIVING + LADDERS	SNOW, ICE, SLUSH, DRIVING + LADDERS	SNOW, ICE, SLUSH, DRIVING + LADDERS	SNOW, ICE, SLUSH, WATER, DRIVING + LADDERS	OIL, GREASE, WATER, DRIVING + LADDERS
TRACTION TYPE	CARBON STEEL STUDS	TUNGSTEN CARBIDE STUDS	CARBON STEEL STUDS	CARBON STEEL STUDS	TUNGSTEN CARBIDE STUDS	STEEL PLATE	TUNGSTEN CARBIDE STUDS	TUNGSTEN CARBIDE STUDS	RUBBER SPIKELESS	RUBBER SPIKELESS
NUMBER OF TRACTION STUDS PER DEVICE	8	8	12	10	14	--	6	6	--	--
TRACTION COVERAGE	FULL FOOT	FULL FOOT	FULL FOOT	FULL FOOT	FULL FOOT	HEEL ONLY	MID FOOT	MID FOOT	FULL FOOT	FULL FOOT
CLOSURE TYPE	SLIDE ON	SLIDE ON	SLIDE ON	CINCH	SLIDE ON	HOOK + LOOP	SLIDE ON	SLIDE ON	CINCH	CINCH
PROTECTION TYPE	TRACTION	TRACTION	TRACTION	TRACTION	TRACTION, REFLECTIVE	TRACTION, REFLECTIVE	TRACTION, REFLECTIVE	TRACTION, REFLECTIVE	TRACTION	TRACTION
ATTACHMENT REMAINS FLEXIBLE IN UP TO WHAT TEMPERATURE?	-40° F / -40° C	-40° F / -40° C	-40° F / -40° C	-40° F / -40° C	--	--	--	--	-40° F / -40° C	SLING: -40° F / -40° C SOLE: -20° F / -29° C
REPLACEMENT STUDS AVAILABLE FOR PURCHASE?	AVAILABLE	AVAILABLE	AVAILABLE	AVAILABLE	--	--	--	--	--	--
ADDITIONAL NOTES	--	--	--	--	--	--	DESIGNED FOR NON-HEELED BOOT OR SHOES (IDEAL HEEL HEIGHT: 0 IN - 0.5 IN)	DESIGNED FOR BOOTS OR SHOES WITH A RAISED HEEL (IDEAL HEEL HEIGHT: 0.6 IN - 1 IN)	INDOOR + OUTDOOR OPTION (WILL NOT SCRATCH INDOOR FLOORING)	INDOOR + OUTDOOR OPTION (WILL NOT SCRATCH INDOOR FLOORING)



6315



6317



6325

Visit [ERGO.ZONE/TRACTION-DEVICES](https://ergo.zone/traction-devices) for More Information